

# ATM SYSTEM TEST TOOL

SWIM35  
FUTURE OP Y2035  
FF-ICE FIXM AIXM  
TBO E-AMAN

OPERATE

PREPARE

BAU25  
20Y LEGACY  
OLDI AIDC AFTN  
ATN-B2 FANS1-A

SWIM25  
10Y MIXED OP  
SWIM- FF-ICE+  
OLDI/AIDC FPL2012

INTERFERE

ROLLOUT

DEPLOY

RETIRE

Ready for 2030?

# THE TEAM

100+ years experience  
in **ATM**

The ANSP  
for Hungary  
and the upper airspace  
of KFOR sector



Innovations in:

Free route,  
Remote sector,  
Remote tower

Record Traffic in 2024:  
1,3 million+  
movements

HungaroControl

PROOFIT

20+ years experience  
in **TEST AUTOMATION**

The test automation  
expert company for  
safety critical  
industries.



Innovations in:

Hybrid test automaton,  
Performance testing,  
Domain specific languages

Record Test Executions in 2024:  
8 million+  
test verification steps

**BEST OF  
BOTH  
WORLDS**

# COMMON PROBLEM

Few experts

Time pressure

Change frequency

Functional changes

Regulatory changes

Increasing traffic

- ❖ **Management**
- ❖ **ANS concerns**
- ❖ **Technical**



## CHALLENGES:

MANAGING  
ACCELERATED  
CHANGES  
IN ATM

# UNIFIED SOLUTION

- ❖ **Human**
- ❖ **System**
- ❖ **Procedure**

Empower team

Knowledge to infra

Vendor agnostic

Portable testware

Traceability

## RESOURCES:

RELYING ON  
SAFETY  
CULTURE

# ASPECTS

# 360 DEGREE CONTROL



## as ATCOs:

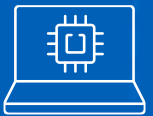
Observe and manipulate  
all lists and tracklabels  
**Multi CWP, Multi Role**



## as SVs:

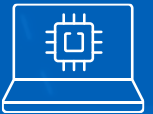
Role & sectorization  
**Multi sector**

## as Orchestrator:

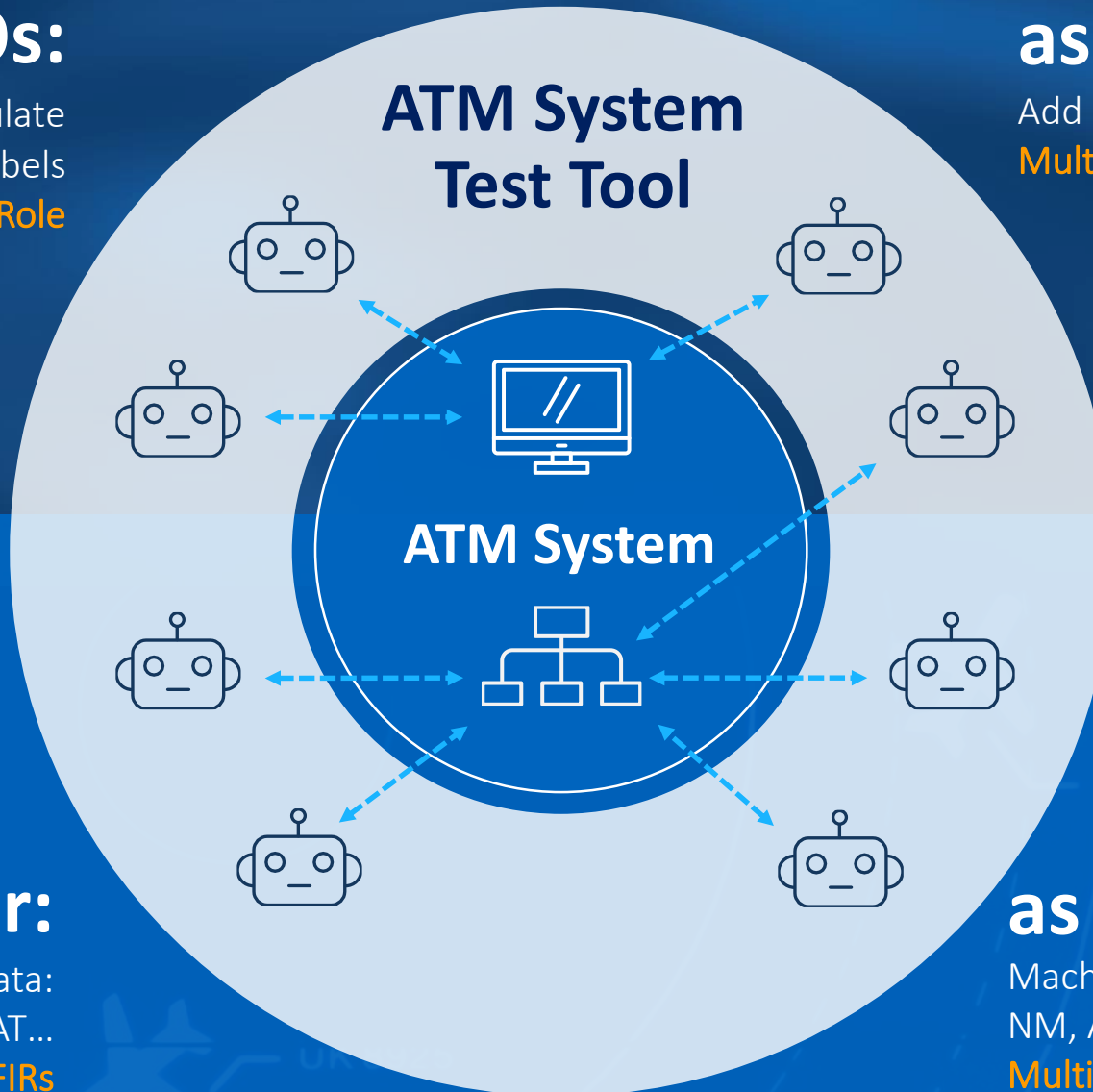


Signal, Synch, Join,  
timestamp, CallSign  
**Multi systems**

## as Stimulator:



Real-time surveillance data:  
PSR, SSR, ADS-B, MLAT...  
**Multi FIRs**



## as FDs:

Add & change flight data  
**Multi Role**



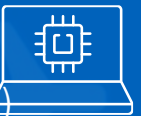
## as Admins:

Operations: stop, start  
Config & dataset changes  
**Multi ATM Vendor**



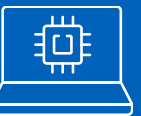
## as Air-Ground:

Interfaces for datalink:  
CPDLC, ADS-C (ATN-B2, FANS1-A)  
**Multi ICAO regions**












## as Ground-Ground:

Machine interfaces for  
NM, AFTN, OLDI, AIDC, SWIM/FF-ICE...  
**Multi FIRs**



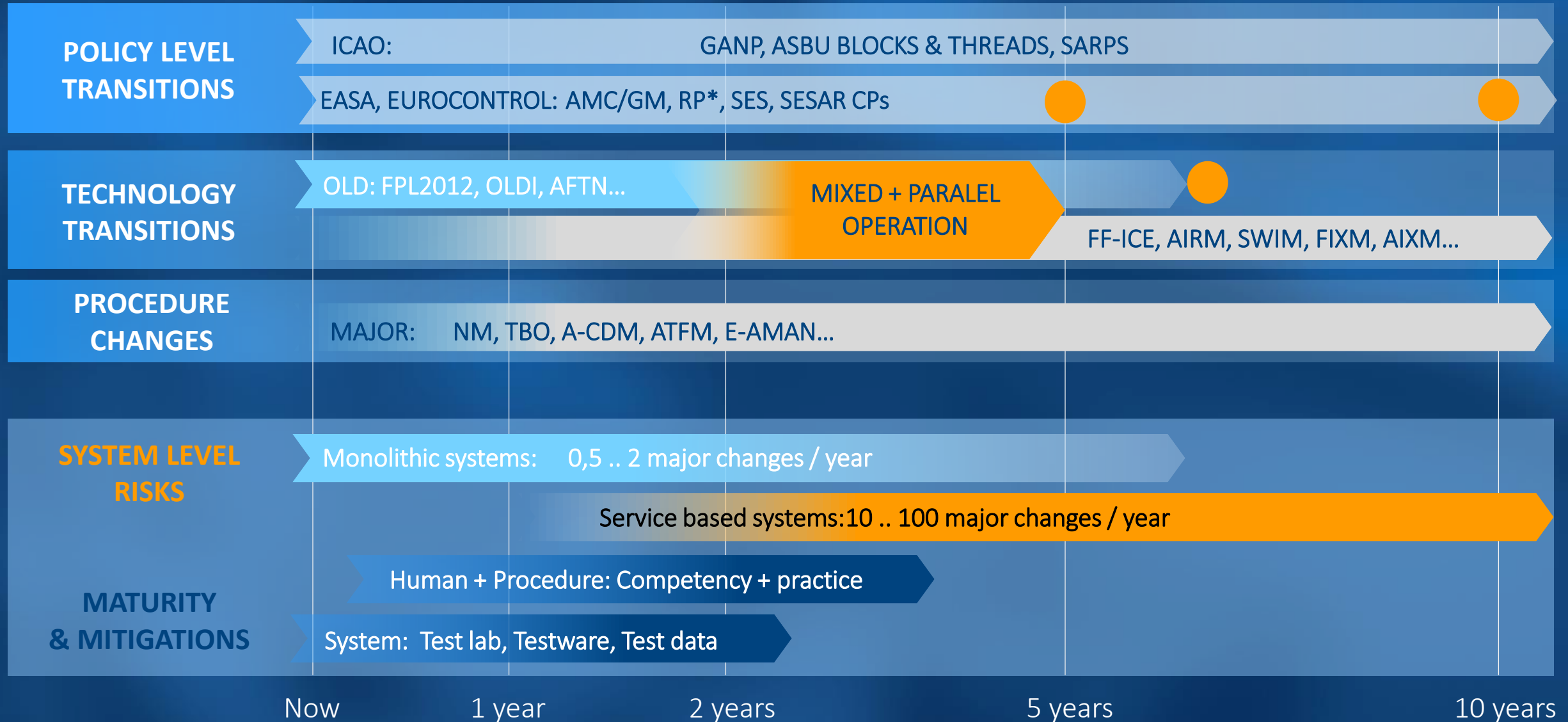


# VALUES FOR STAKEHOLDERS

	ANSP	ATM VENDOR	INTEGRATOR
Strategic	 <ul style="list-style-type: none"><li>Lead the changes</li><li>CAPEX in the future</li><li>Expert engagement</li></ul>	 <ul style="list-style-type: none"><li>Build trust</li><li>Focus on core activity</li><li>Shorter time2market</li></ul>	 <ul style="list-style-type: none"><li>Build competence</li><li>Higher added value</li><li>Long term support</li></ul>
Tactical	 <ul style="list-style-type: none"><li>Measured risk mitigation</li><li>Reduced incident nr.</li><li>HR peak load distributed</li></ul>	 <ul style="list-style-type: none"><li>Build confidence</li><li>Reduced ticket nr.</li><li>Reduce SAT duration</li></ul>	 <ul style="list-style-type: none"><li>On-demand capability</li><li>Globally valid testware</li><li>Knowledge to infra</li></ul>
Operative	 <ul style="list-style-type: none"><li>Overnight feedback</li><li>No night shifts</li><li>Auditable test results</li></ul>	 <ul style="list-style-type: none"><li>Fully automated</li><li>CI/CD integration</li><li>Hour scale regression</li></ul>	 <ul style="list-style-type: none"><li>Stronger SLA</li><li>Shorter response time</li><li>Increased coverage</li></ul>

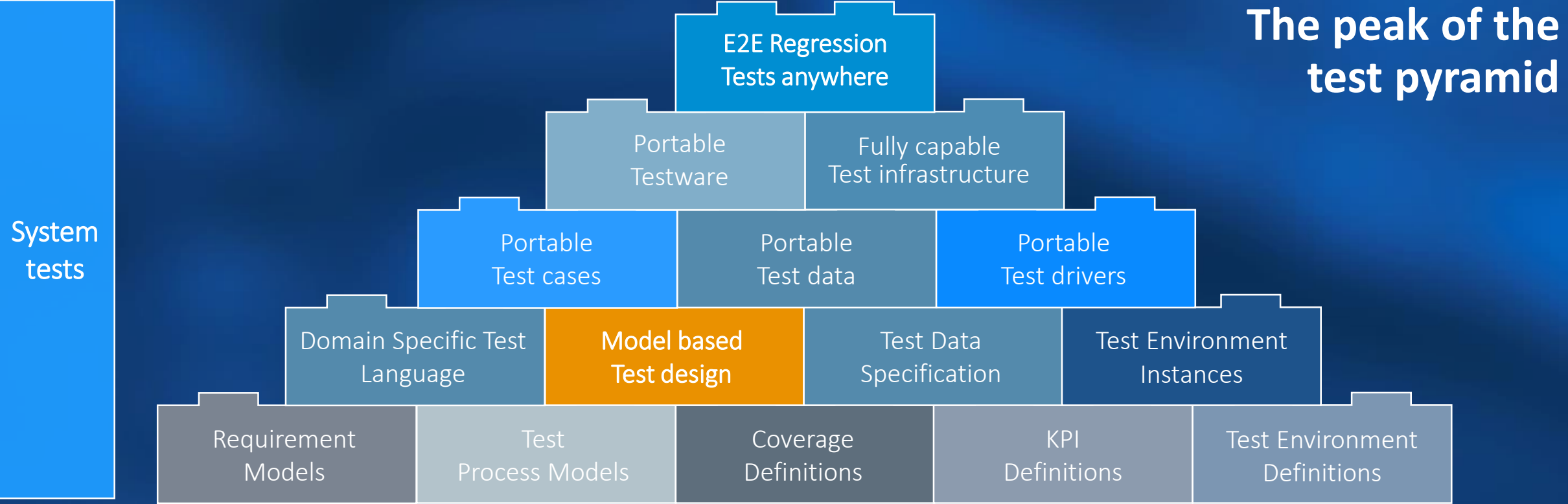
# COMMON ROADMAP

## ALIGNMENT TO THE CHANGES



# DREAM TO REALITY

WE ALL LOVE CHANGES,  
IF WE ARE PREPARED

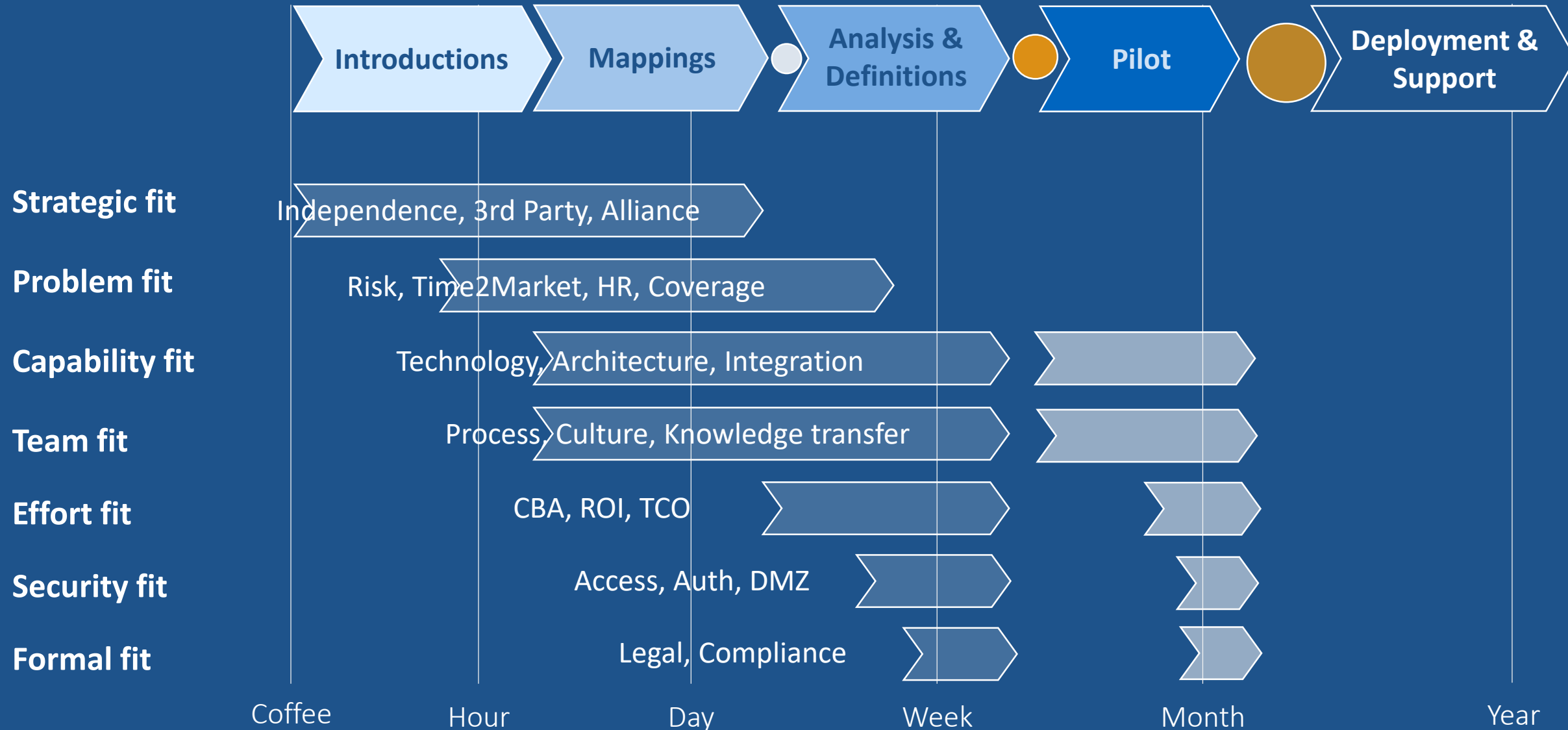


Unit tests	For developers: code, toolchain, definitions, maintenance
------------	---



# APPLICABILITY ASSESSMENT

EFFORTS TO  
PROCEED



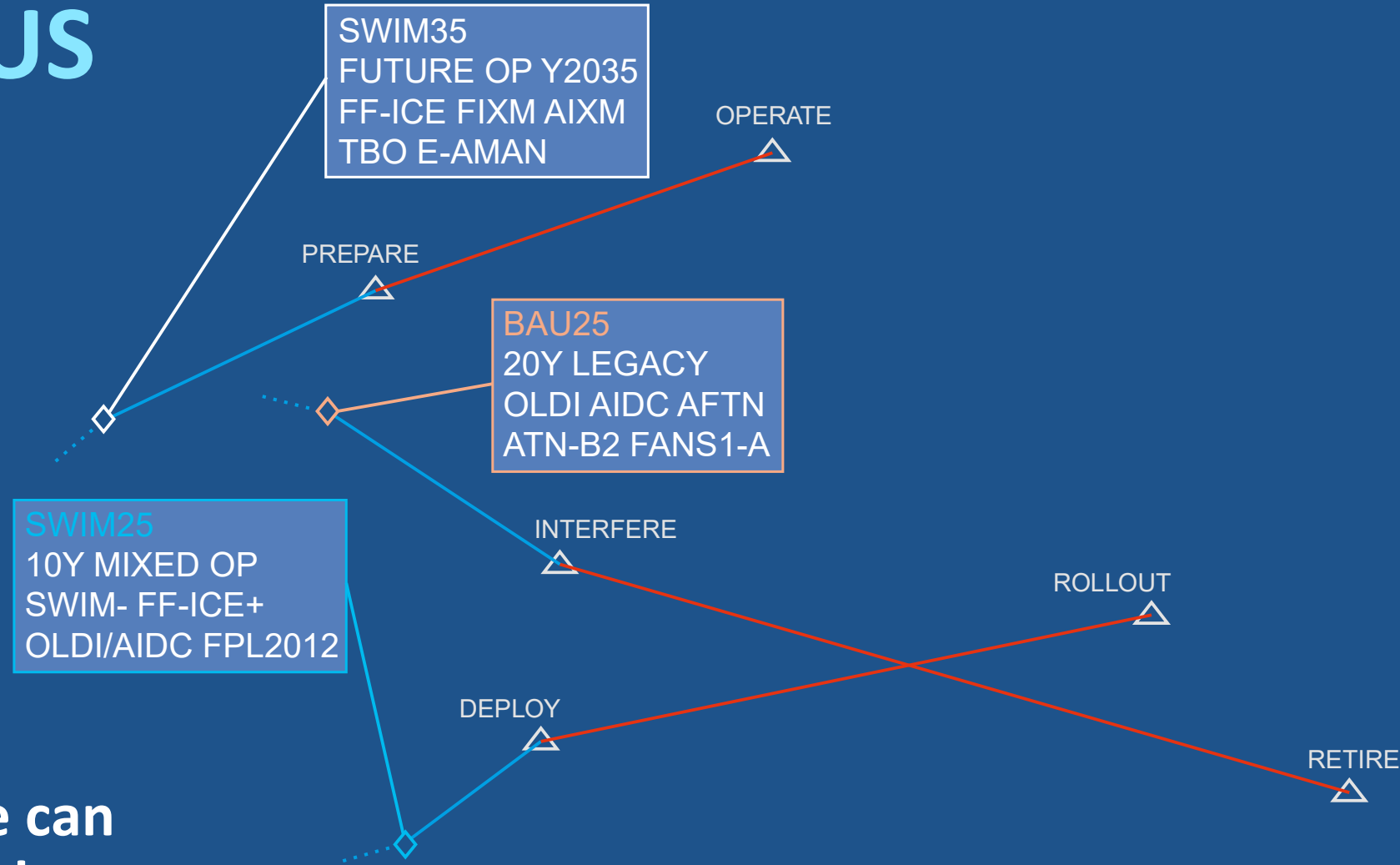


# TRAVEL WITH US

We have already  
all taken off

Shaky turbulence  
and conflicts ahead

Together with you we can  
mitigate and resolve them



# THANK YOU FOR YOUR ATTENTION

